



Test Report

No.T51710261708TC

Date: SEP 25, 2017

Page 1 of 6

The following samples were submitted and identified by/on behalf of the client as:

WEBCAM COVER

Item No. : 110401 , 110402 , 110403
Country of Origin : GUANGDONG,CHINA
Requested Age Grading : OVER 3 YEARS
Sample Receiving Date : SEP 20, 2017
Testing Period : SEP 20, 2017 TO SEP 22, 2017

Table with 2 columns: Test Requested, Conclusion. Contains 5 rows of test results, all showing PASS.

***** FOR FURTHER DETAILS, PLEASE REFER TO THE FOLLOWING PAGE(S) *****

Signed for and on behalf of
SGS-CSTC Standards Technical
Services Co., Ltd. Shenzhen Branch Testing Center

Handwritten signature of Jessica

Feng Shaohong, Jessica
Lab Manager



Unless otherwise agreed in writing, this document is issued by the Company subject to its General Conditions of Service printed overleaf, available on request or accessible at http://www.sgs.com/en/Terms-and-Conditions.aspx and, for electronic format documents, subject to Terms and Conditions for Electronic Documents at http://www.sgs.com/en/Terms-and-Conditions/Terms-e-Documents.aspx. Attention is drawn to the limitation of liability, indemnification and jurisdiction issues defined therein. Any holder of this document is advised that information contained hereon reflects the Company's findings at the time of its intervention only and within the limits of Client's instructions, if any. The Company's sole responsibility is to its Client and this document does not exonerate parties to a transaction from exercising all their rights and obligations under the transaction documents. This document cannot be reproduced except in full, without prior written approval of the Company. Any unauthorized alteration, forgery or falsification of the content or appearance of this document is unlawful and offenders may be prosecuted to the fullest extent of the law. Unless otherwise stated the results shown in this test report refer only to the sample(s) tested and such sample(s) are retained for 30 days only. Attention: To check the authenticity of testing / inspection report & certificate, please contact us at telephone: (86-755) 8307 1443, or email: CN.Doccheck@sgs.com
SGS Bldg, No. 4, Jianghao Industrial Park, No. 430, Jihua Road, Bao'an, Longgang District, Shenzhen, China 518129 t (86-755) 25328888 f (86-755) 83106190 www.sgs.com.cn
中国·深圳·龙岗区坂田吉华路430号江灏工业园4栋SGS大楼 邮编: 518129 t (86-755) 25328888 f (86-755) 83106190 e sgs.china@sgs.com

Results:

1. European Regulation (EC) No. 1907/2006 (REACH) Annex XVII and its amendments – Lead and lead compounds

For consumer products (except jewelry) – Lead content

Method (non-metallic materials): With reference to CPSC-CH-E1002-08.3 - Standard Operation Procedure for Determining Heavy Metal in Non-Metal Children Product

Test Item(s)	Lead (Pb)		
MDL (mg/kg)	10		
Permissible Limit (mg/kg)	500		
Specimen Description	Alias No.	Tracing No.	Result(s) (mg/kg)
1. Black plastic (Webcam cover)	1	1	ND

- Note:
- MDL = Method Detection Limit
 - ND = Not Detected (lower than MDL)
 - 1% = 10000 mg/kg = 10000 ppm

2. Regulation (EC) No. 1907/2006 (REACH), Annex XVII and its Amendments – Cadmium Content

Method: With reference to EN1122: 2001 method B / IEC 62321-5:2013

Analysis was performed by Inductively Coupled Plasma Optical Emission Spectrometer (ICP-OES) / Atomic Absorption Spectrometer (AAS)

For Plastic

Test Item(s)	Cadmium (Cd)		
Permissible Limit (mg/kg)	100		
Specimen Description	Alias No.	Tracing No.	Result(s) (mg/kg)
1. Black plastic (Webcam cover)	2	1	ND



SGS-CSTC (China) Technical Services Co., Ltd.
Shenzhen Branch Testing Center Hardlines

Unless otherwise agreed in writing, this document is issued by the Company subject to its General Conditions of Service printed overleaf, available on request or accessible at <http://www.sgs.com/en/Terms-and-Conditions.aspx> and, for electronic format documents, subject to Terms and Conditions for Electronic Documents at <http://www.sgs.com/en/Terms-and-Conditions/Terms-e-Document.aspx>. Attention is drawn to the limitation of liability, indemnification and jurisdiction issues defined therein. Any holder of this document is advised that information contained hereon reflects the Company's findings at the time of its intervention only and within the limits of Client's instructions, if any. The Company's sole responsibility is to its Client and this document does not exonerate parties to a transaction from exercising all their rights and obligations under the transaction documents. This document cannot be reproduced except in full, without prior written approval of the Company. Any unauthorized alteration, forgery or falsification of the content or appearance of this document is unlawful and offenders may be prosecuted to the fullest extent of the law. Unless otherwise stated the results shown in this test report refer only to the sample(s) tested and such sample(s) are retained for 30 days only.
Attention: To check the authenticity of testing / inspection report & certificate, please contact us at telephone: (86-755) 8307 1443, or email: CN.Doccheck@sgs.com

SGS Bldg, No. 4, Jianghao Industrial Park, No. 430, Jihua Road, Bantian, Longgang District, Shenzhen, China 518129 t (86-755) 25328888 f (86-755) 83106190 www.sgsgroup.com.cn
中国·深圳·龙岗区坂田吉华路430号江灏工业园4栋SGS大楼 邮编: 518129 t (86-755) 25328888 f (86-755) 83106190 e sgs.china@sgs.com

- Note:
- Permissible and Reference Limit specified by Commission Regulation (EU) No 494/2011 & Commission Regulation (EU) No 2016/217 amending Annex XVII of REACH Regulation (EC) No 1907/2006 (previously restricted under entry 23 of Regulation (EC) No 552/2009 and directive 91/338/EC).
 - mg/kg = milligram per kilogram
 - ND = Not Detected (lower than MDL)
 - MDL = Method Detection Limit = 5 mg/kg
 - 1% = 10000 mg/kg = 10000 ppm

3. European Regulation (EC) No. 1907/2006 (REACH) Annex XVII and its amendments – Phthalate content

Method: With reference to CPSC-CH-C1001-09.3

Analysis was performed by Gas Chromatography Mass Spectrometer (GC-MS)

Materials can be placed in the mouth

Test Item(s)	CAS No.	Result (s) (%)	MDL (%)	Permissible Limit (%)
Alias No.	--	3		
Tracing No.	--	1		
Specimen No.	--	1		
Dibutyl Phthalate (DBP)	84-74-2	ND	0.003	--
Benzylbutyl Phthalate (BBP)	85-68-7	ND	0.003	--
Bis-(2-ethylhexyl) Phthalate (DEHP)	117-81-7	ND	0.003	--
Diisononyl Phthalate (DINP)	28553-12-0 68515-48-0	ND	0.010	--
Di-n-octyl Phthalate (DNOP)	117-84-0	ND	0.003	--
Diisodecyl Phthalate (DIDP)	26761-40-0 68515-49-1	ND	0.010	--
Total (DBP+BBP+DEHP)		ND	--	0.1
Total (DINP+DNOP+DIDP)		ND	--	0.1

Specimen Description:

1. Black plastic (Webcam cover)



Unless otherwise agreed in writing, this document is issued by the Company subject to its General Conditions of Service printed overleaf, available on request or accessible at <http://www.sgs.com/en/Terms-and-Conditions.aspx> and, for electronic format documents, subject to Terms and Conditions for Electronic Documents at <http://www.sgs.com/en/Terms-and-Conditions/Terms-e-Documents.aspx>. Attention is drawn to the limitation of liability, indemnification and jurisdiction issues defined therein. Any holder of this document is advised that information contained hereon reflects the Company's findings at the time of its intervention only and within the limits of Client's instructions, if any. The Company's sole responsibility is to its Client and this document does not exonerate parties to a transaction from exercising all their rights and obligations under the transaction documents. This document cannot be reproduced except in full, without prior written approval of the Company. Any unauthorized alteration, forgery or falsification of the content or appearance of this document is unlawful and offenders may be prosecuted to the fullest extent of the law. Unless otherwise stated the results shown in this test report refer only to the sample(s) tested and such sample(s) are retained for 30 days only.

Attention: To check the authenticity of testing / inspection report & certificate, please contact us at telephone: (86-755) 8307 1443, or email: CN.Doccheck@sgs.com

SGS-CSTC (Shenzhen) Technical Services Co., Ltd.
Shenzhen Branch Testing Center Hardlines

SGS Bldg, No. 4, Jianghao Industrial Park, No. 430, Hua Road, Bantian, Longgang District, Shenzhen, China 518129 t (86-755) 25328888 f (86-755) 83106190 www.sgs.com.cn
中国·深圳·龙岗区坂田吉华路430号江灏工业园4栋SGS大楼 邮编: 518129 t (86-755) 25328888 f (86-755) 83106190 sgs.china@sgs.com

- Note:
- ND = Not Detected (lower than MDL)
 - MDL = Method Detection Limit
 - % = percentage by weight
 - Results shown as ND are ignored in the sum calculation

4. European Regulation (EC) No. 850/2004 and its amendments – Alkanes C10-C13, chloro (short-chain chlorinated paraffins) (SCCPs)

Method: With reference to ISO 18219:2015

Analysis was performed by Gas Chromatography Electron Capture Detector (GC-ECD) / Gas Chromatography Negative Chemical Ionization Mass Spectrometry (GC-NCI-MS)

Articles :

Test Item(s)	Result(s) (mg/kg)	MDL (mg/kg)	Permissible Limit (mg/kg)
Specimen No.	1		
Alkanes C10-C13, chloro (short-chain chlorinated paraffins) (SCCPs)	ND	50	1500

Specimen Description:

1. Black plastic (Webcam cover)

- Note:
- mg/kg = milligram per kilogram
 - MDL = Method Detection Limit
 - ND = Not Detected (lower than MDL)
 - The limit is quoted from Regulation (EU) No. 2015/2030



Unless otherwise agreed in writing, this document is issued by the Company subject to its General Conditions of Service printed overleaf, available on request or accessible at <http://www.sgs.com/en/Terms-and-Conditions.aspx> and, for electronic format documents, subject to Terms and Conditions for Electronic Documents at <http://www.sgs.com/en/Terms-and-Conditions/Terms-e-Documents.aspx>. Attention is drawn to the limitation of liability, indemnification and jurisdiction issues defined therein. Any holder of this document is advised that information contained hereon reflects the Company's findings at the time of its intervention only and within the limits of Client's instructions, if any. The Company's sole responsibility is to its Client and this document does not exonerate parties to a transaction from exercising all their rights and obligations under the transaction documents. This document cannot be reproduced except in full, without prior written approval of the Company. Any unauthorized alteration, forgery or falsification of the content or appearance of this document is unlawful and offenders may be prosecuted to the fullest extent of the law. Unless otherwise stated the results shown in this test report refer only to the sample(s) tested and such sample(s) are retained for 30 days only.

Attention: To check the authenticity of testing / inspection report & certificate, please contact us at telephone: (86-755) 8307 1443, or email: CN.Doccheck@sgs.com

SGS Bldg, No. 4, Jianghao Industrial Park, No. 430, Jihua Road, Bantian, Longgang District, Shenzhen, China 518129 t (86-755) 25328888 f (86-755) 83106190 www.sgs.com.cn
 中国·深圳·龙岗区坂田吉华路430号江灏工业园4栋SGS大楼 邮编: 518129 t (86-755) 25328888 f (86-755) 83106190 sgs.china@sgs.com

5. EU Directive 2011/65/EU (RoHS, Previously 2002/95/EC) - Wet Chemical

Method: With reference to IEC 62321: 2008, IEC 62321-4:2013, IEC62321-5:2013, IEC 62321-7-2:2017, IEC62321-6:2015

For Lead, Cadmium and Mercury, analysis was performed by Inductively Coupled Plasma Optical Emission Spectrometer (ICP-OES) / Atomic Absorption Spectrometer (AAS)

For Hexavalent Chromium, analysis was performed by Ultraviolet Visible Spectrophotometer (UV-Vis)

For PBBs & PBDEs, analysis was performed by Gas Chromatography Mass Spectrometer (GC-MS)

Test Item(s)	Result (mg/kg)	MDL (mg/kg)	Permissible Limit (mg/kg)
	1		
Lead (Pb)	ND	2	1000
Cadmium(Cd)	ND	2	100
Mercury (Hg)	ND	2	1000
Hexavalent Chromium (CrVI) by alkaline extraction	ND	8	1000
Sum of PBBs	ND	--	1000
Monobromobiphenyl	ND	5	--
Dibromobiphenyl	ND	5	--
Tribromobiphenyl	ND	5	--
Tetrabromobiphenyl	ND	5	--
Pentabromobiphenyl	ND	5	--
Hexabromobiphenyl	ND	5	--
Heptabromobiphenyl	ND	5	--
Octabromobiphenyl	ND	5	--
Nonabromobiphenyl	ND	5	--
Decabromobiphenyl	ND	5	--
Sum of PBDEs	ND	--	1000
Monobromodiphenyl ether	ND	5	--
Dibromodiphenyl ether	ND	5	--
Tribromodiphenyl ether	ND	5	--
Tetrabromodiphenyl ether	ND	5	--
Pentabromodiphenyl ether	ND	5	--
Hexabromodiphenyl ether	ND	5	--
Heptabromodiphenyl ether	ND	5	--
Octabromodiphenyl ether	ND	5	--
Nonabromodiphenyl ether	ND	5	--
Decabromodiphenyl ether	ND	5	--
Comment	PASS	--	--

Specimen Description:

1. Black plastic (Webcam cover)



Unless otherwise agreed in writing, this document is issued by the Company subject to its General Conditions of Service printed overleaf, available on request or accessible at <http://www.sgs.com/en/Terms-and-Conditions.aspx> and, for electronic format documents, subject to Terms and Conditions for Electronic Documents at <http://www.sgs.com/en/Terms-and-Conditions/Terms-e-Documents.aspx>. Attention is drawn to the limitation of liability, indemnification and jurisdiction issues defined therein. Any holder of this document is advised that information contained hereon reflects the Company's findings at the time of its intervention only and within the limits of Client's instructions, if any. The Company's sole responsibility is to its Client and this document does not exonerate parties to a transaction from exercising all their rights and obligations under the transaction documents. This document cannot be reproduced except in full, without prior written approval of the Company. Any unauthorized alteration, forgery or falsification of the content or appearance of this document is unlawful and offenders may be prosecuted to the fullest extent of the law. Unless otherwise stated the results shown in this test report refer only to the sample(s) tested and such sample(s) are retained for 30 days only.

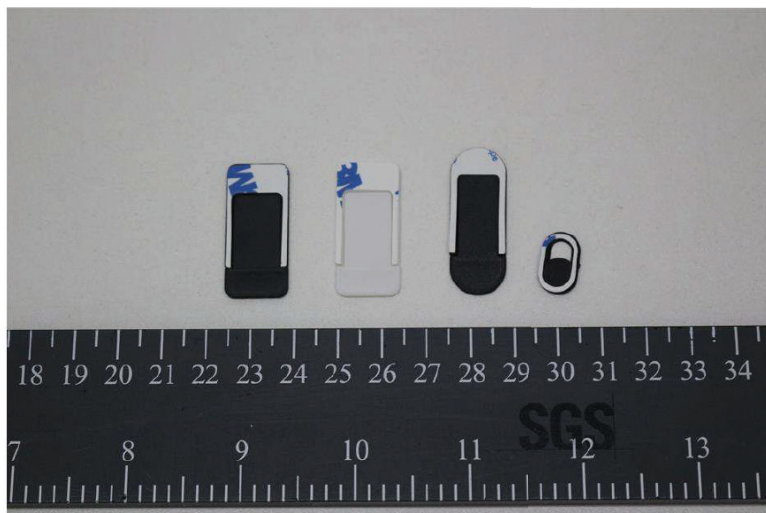
Attention: To check the authenticity of testing / inspection report & certificate, please contact us at telephone: (86-755) 8307 1443, or email: CN.Doccheck@sgs.com

SGS-CSTC (Shenzhen) Technical Services Co., Ltd.
Shenzhen Branch Testing Center Hardlines

SGS Bldg, No. 4, Jianghao Industrial Park, No. 430, Jihua Road, Bantian, Longgang District, Shenzhen, China 518129 t (86-755) 25328888 f (86-755) 83106190 www.sgs.com.cn
中国·深圳·龙岗区坂田吉华路430号江灏工业园4栋SGS大楼 邮编: 518129 t (86-755) 25328888 f (86-755) 83106190 e sgs.china@sgs.com

- Note:
- mg/kg = milligram per kilogram
 - MDL = Method Detection Limit
 - ND = Not Detected (lower than MDL)
 - The result of Hexavalent chromium (Cr(VI)) is deemed to be "ND" since the result of total chromium content is "ND", so the testing of Hexavalent chromium (Cr(VI)) is not requirement.
 - If the Chromium (Cr) content is greater than the MDL, And confirmation test of Hexavalent Chromium (Cr(VI)) is required.
 - The maximum permissible limit is quoted from the EU Directive 2011/65/EU Annex II

Sample Photo:



SGS authenticate the photo on original report only

*** End of Report ***



Unless otherwise agreed in writing, this document is issued by the Company subject to its General Conditions of Service printed overleaf, available on request or accessible at <http://www.sgs.com/en/Terms-and-Conditions.aspx> and, for electronic format documents, subject to Terms and Conditions for Electronic Documents at <http://www.sgs.com/en/Terms-and-Conditions/Terms-e-Documents.aspx>. Attention is drawn to the limitation of liability, indemnification and jurisdiction issues defined therein. Any holder of this document is advised that information contained hereon reflects the Company's findings at the time of its intervention only and within the limits of Client's instructions, if any. The Company's sole responsibility is to its Client and this document does not exonerate parties to a transaction from exercising all their rights and obligations under the transaction documents. This document cannot be reproduced except in full, without prior written approval of the Company. Any unauthorized alteration, forgery or falsification of the content or appearance of this document is unlawful and offenders may be prosecuted to the fullest extent of the law. Unless otherwise stated the results shown in this test report refer only to the sample(s) tested and such sample(s) are retained for 30 days only.

Attention: To check the authenticity of testing / inspection report & certificate, please contact us at telephone: (86-755) 8307 1443, or email: CN.Doccheck@sgs.com

SGS-CSTC (Shenzhen) Technical Services Co., Ltd.
Shenzhen Branch Testing Center Hardlines

SGS Bldg, No. 4, Jianghao Industrial Park, No. 430, Jihua Road, Banlan, Longgang District, Shenzhen, China 518129 t (86-755) 25328888 f (86-755) 83106190 www.sgs.com.cn
中国·深圳·龙岗区坂田吉华路430号江灏工业园4栋SGS大楼 邮编: 518129 t (86-755) 25328888 f (86-755) 83106190 e sgs.china@sgs.com